

2022 ANNUAL REPORT



PRSG

PORTLAND REFUGEE SUPPORT GROUP

TABLE OF CONTENT

1. Letter from Executive Director
2. Our Team
3. About PRSG
4. Refugees Climate (Global & Local)
5. PRSG Programs
 - a. Community Connections
 - b. Community Wellness
 - c. Community Classroom
 - d. Community Aid
6. Financial Report
7. Our Investors



EXECUTIVE LETTER

With your support and investment, PRSG had our most impactful year ever, and we are incredibly grateful for the opportunity to continue this work in 2023.

At the beginning of 2022, Angela, Yasser, and I, along with our amazing board of directors, were just starting to look ahead at what we might accomplish together. Oregon had just welcomed over 1200 arrivals from Afghanistan in the previous months, and the generosity of our community was overwhelming. Dozens of volunteers were calling Angela to see how they could help. Financial contributions helped us provide vital material needs. Funds from the state that were once distributed only to federally contracted resettlement agencies were made available to community-based organizations like PRSG. At the same time, shadows of another unjust conflict in Europe were on the horizon, and instability in Latin America made it apparent that we would be called upon to do even more.

Together with the mission of assisting those newly arrived in our community, while continuing to uplift the ongoing aspirations of families who have been with us for years, PRSG supported over 850 individuals in 2022. Our Community Aid distributed over \$66,000 in financial assistance in 2022 alone. Community Connections trained and matched dozens of new volunteers. Community Wellness programs supported the holistic wellbeing of our community, and for another first, we began offering in-school tutoring opportunities for refugee and immigrant students in partnership with Portland Public Schools.

None of this would have been possible without you. Even more important than your financial investments, it is your welcoming spirit, and willingness to stand alongside those who have been forced from their homes that makes our work possible.

Thank you,

Peter Newbegin

Executive Director

Portland Refugee Support Group



OUR TEAM

BOARD OF DIRECTORS

NURA ELMAGBARI
Board President

JENNIFER SHAREEF
Board Vice President

EVA KHAN
Treasurer/Secretary

LISA DEAN
Board Member

TAHIA ABDELRAHMAN
Board Member

EMMANUELLE JARMON
Board Member

STAFF

PETER NEWBEGIN
Executive Director

ANGELA SWAN
Deputy Director

YASSER SHAREEF
Operations Coordinator

MEGAN FRENCH
Education Coordinator

SOHEILA AZADI
Programs Coordinator

ALA ALABED
Community Health Worker

ELAHA ALIZADA
Community Health Worker



Hand in Hand, Rebuilding Lives.

As one of the few community-based organizations supporting the material, financial, and social needs of our newest community members – regardless of country of origin, or status as refugee or asylum seeker – PRSG is dedicated to creating a safe and welcoming environment for all people seeking sanctuary in the state of Oregon.

Mission

To re-empower refugees through social support and education, walking alongside them to navigate a path to a successful life in the US.

Vision

We envision a community where all people seeking sanctuary feel they belong – a place where they are safe, prosperous, and able to pursue happiness.

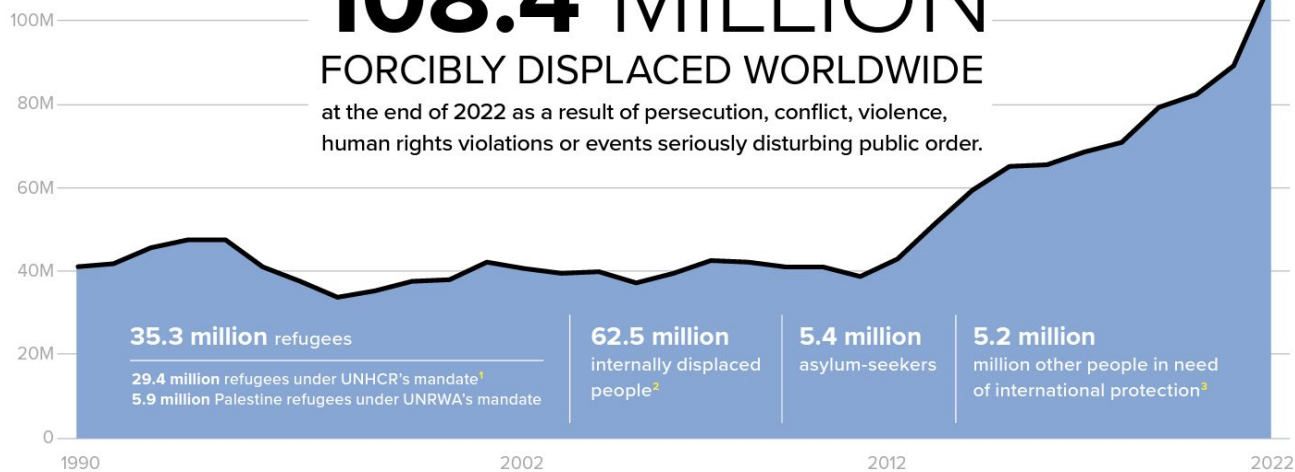
REFUGEE CLIMATE



108.4 MILLION

FORCIBLY DISPLACED WORLDWIDE

at the end of 2022 as a result of persecution, conflict, violence, human rights violations or events seriously disturbing public order.



2022 Global Refugee Situation

In 2022, the global refugee crisis reached staggering proportions, with **more than 108 million** individuals experiencing the harrowing ordeal of forced displacement. Among this colossal number, **over 35 million** were refugees, with **2.6 million** resettling to the US. At PRSG, our mission to create a welcoming community for those who arrive in the Pacific Northwest reflects our commitment to re-empower and work hand in hand with our new neighbors.

N.N. (2022) 'Global Trends Forced Displacements in 2022'. UNHCR: United Nations High Commissioner for Refugees.

<https://www.unhcr.org/sites/default/files/2023-06/global-trends-report-2022.pdf>

Photo by [Julie Ricard](#) on [Unsplash](#)

2022 Oregon Refugee Situation

In 2022, there were over 25,000 formal refugee arrivals through the US Refugee Admissions Program, more than twice as many as the previous year.

These new arrivals strained the capacity of federally contracted resettlement agencies, and PRSG stepped up to fill critical gaps in the system.

Volunteers and PRSG staff members made daily visits to the hotels where refugees were temporarily housed, and to their new homes, conducting wellness checks, delivering supplies, and helping to connect individuals to community resources. In doing so, PRSG delivered over **\$10,000** in goods, and connected hundreds of refugees to employment, medical, transportation, and government services.



OUR PROGRAMS

PRSG operates in four main areas where refugees have identified the need for additional support beyond what is available through resettlement agencies.



Community **Aid**



Community **Classrooms**



Community **Connections**



Community **Wellness**

Community Aid

PRSG provides in-kind donations and short-term financial assistance to families, including rent, utility, medical bills, and other emergency needs. Volunteers work with families to ensure the aid supports long-term goals toward self-sufficiency.

In 2022, our Refuge Programs Director found success working with five individuals to pilot the implementation of EMPATH's Bridge to Self Sufficiency among the refugee and asylum seeking community. EMPATH is a nationally recognized, trauma-informed approach to upward economic mobility that focuses on the participant's own priorities, goals, and desires as they are re-empowered and settle into a successful life in the US.



Community Classroom

PRSG pairs tutors with clients to improve English skills and assist with classwork. Tutoring is provided to refugee children and their parents to support language proficiency, self-confidence, and motivation to succeed in educational goals.

In 2022, PRSG enlisted 21 volunteer tutors who were paired with refugee families or individuals. The Beyond Reading summer program saw the participation of 46 students in virtual sessions spanning six weeks, aimed at enhancing critical literacy skills. The participants comprised 21 elementary-aged, 15 middle school-aged, and 10 high school-aged students.

Within PRSG's distinctive in-home tutoring model, volunteers not only contribute to the learning experience but also, as highlighted by one of our volunteers, frequently find that they gain as much as they give.



Community Connection

PRSG pairs a core volunteer with a family, building trusting relationships, and helping clients adjust to their new homes. Volunteers work together with families to set and achieve goals that lay the foundation for successful lives in the United States.

In 2022, PRSG engaged over **160** volunteers, and Core Volunteers were paired with families worked to build bonds of friendship and understanding across cultures. In September of 2021, PRSG hired our first full-time Volunteer Coordinator, and the pace of recruitment activities dramatically increased just in time to meet the needs of our new Afghan neighbors. Volunteers visited hotels where families were temporarily housed on an almost daily basis to deliver vital services, household items, and create connections to PRSG programs.



Community Wellness

PRSG hosts wellness events for adults and children as well as annual summer camps for youth, providing mental health support through art, play, and dialogue. Summer youth camps bring together refugee and non-refugee youth, building long-lasting relationships.

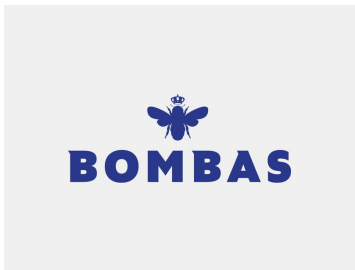
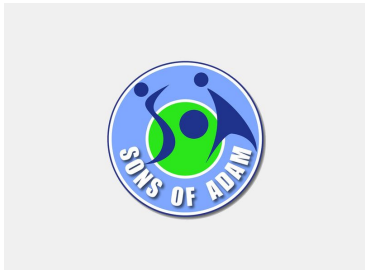
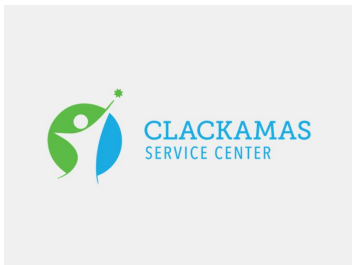
Camp Mahara, PRSG's skill building camp conducted in partnership with Trillium Creek Training and Rehabilitation Coalition, had over **120** youth participants. TCTC's 10 acres of woods, trails, and orchards provide a safe place for refugee youth to work with specially trained horses to build confidence, restore cultural connections, and learn about the beauty of their new home.

Camp Silah, PRSG's overnight on Summer Camp, hosted over **100** refugee and non-refugee youth. Beyond a checklist of initial needs, Community Wellness programs address the social and mental wellbeing of refugees that set them up for long-term success.



OUR PARTNERS

PRSG is but one of many organizations in our community working to build a more just and equitable system for our new neighbors. We are proud to partner with dozens of organizations, putting families at the center of a collective effort to improve the quality of services for refugee families.



OUR INVESTORS

Tricia Ann Zigrang
(individual)

Daniel Littrell
(individual)



Marie Lamfrom
CHARITABLE FOUNDATION

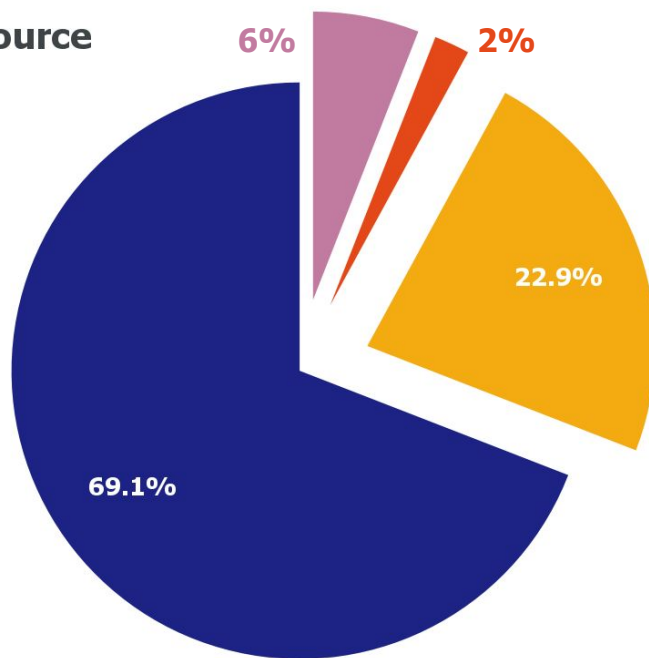


Total Revenue

2019: **\$105,824**
2020: **\$163,648**
2021: **\$625,190**
2022: **\$902,737**

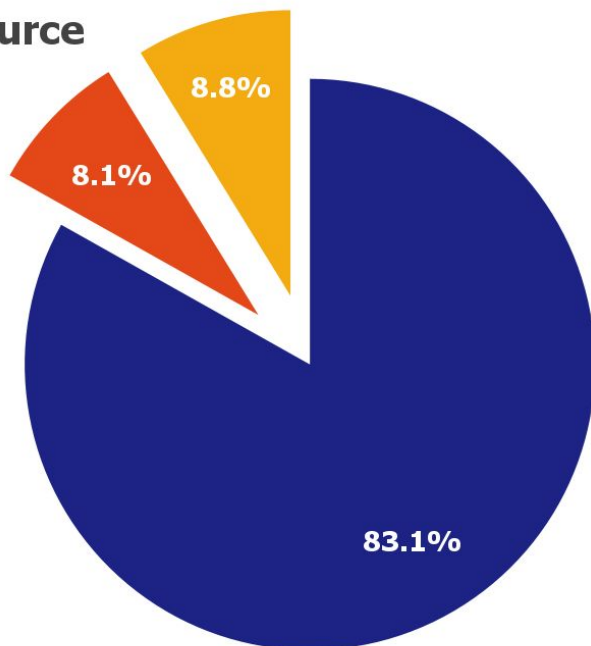
2022 Revenue by Source

- Individuals
- Program Service
- Foundations
- Government



2022 Expense by Source

- Program Services
- Management and General
- Fundraising





Portland Refugee Support Group

10175 SW Barbur Blvd

Portland, OR 97219

www.pdxrsg.org